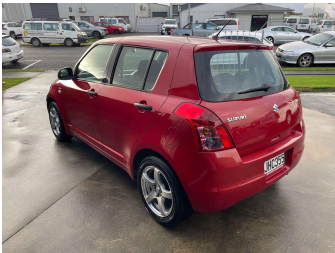


2008 Suzuki Swift GLX 1.5 5DR



Purchase Price

Includes GST, Registration & Licensing

\$6,990

Indicative repayments

\$48.26 per week*

Based on a 208 week term & no deposit.
Total repayments (208) = **\$10,038.55**



peace of mind motoring



Top features

- » 16 valve DOHC Engine d...
- » 2 Air bags
- » 2 KEY'S
- » 5 Seats
- » ABS
- » ABS Braking w/ EBD
- » Air Conditioning
- » Alloys
- » Bluetooth
- » Brake Assist
- » Cam Chain Cam type
- » Car Alarm
- » Central Locking
- » Central Locking
- » Child seat anchor poin...
- » Dark Grey Interior col...
- » EBD
- » Electric mirrors

Body Style

5 door, Hatch

Odometer

157,384 km

Engine

1490 cc, Internal Combustion

Fuel Type

Petrol

Transmission

Manual, Front Wheel

Wheels

-

VIN

JSAEZC21S00418491

Interior

Charcoal, Cloth

Safety

-

Reg No.

JHC355

Ext Colour

Red

History

NZ New, 2 owners

Seats

5 seats, Cloth

CO2 Emissions

-

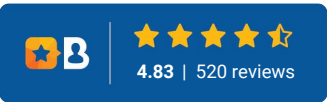
Energy Economy

-

Stock ID: 2553



Southern Cross Autos | Phone 07 308 0265 | Email
clive@southerncrossautos.co.nz
7 Gateway Drive, Coastlands, WHAKATANE 3120, New Zealand
www.southerncrossautos.co.nz



* Southern Cross Autos is not a lender nor a financial adviser. Any amounts displayed should not be seen as an offer of finance or taken as financial advice. The interest rate, fees and loan term used in this calculation may not actually represent those available from lenders. Actual interest rates, fees and loan terms will vary per lender and are typically based on an assessment of your credit risk and responsible lending criteria. Any repayment amounts displayed are indicative only and have been calculated using several other indicative inputs. The interest rate used in this calculation is an arbitrary 13.80%, however exact interest rates vary per lender. The term of the loan used in this calculation is 208 week. Exact terms available vary per lender although options typically include 6, 12, 18, 24, 36, 48 and 60 months. This calculation also includes two typical mandatory fees charged by lenders. These are an account admin fee of \$8.00 per month (other payment frequencies may be available) and a one-off establishment fee of \$422.00. Typically, this fee can be paid upfront or, as in this calculation, be capitalised over the contract term, ie. included in the loan amount. These fees can vary per lender and other non-mandatory fees and charges may also apply. The total amount of repayments has been calculated by multiplying 208 weekly repayments (based on a 208 week term) by the weekly repayment amount of \$48.26 which equals \$10,038.55. This calculator does not consider any of your own personal circumstances and we strongly suggest you seek budgeting advice prior to committing to any loan contract. Responsible lending criteria and lender terms and conditions will likely apply to any finalised loan contract. Proof of security and/or vehicle insurance may also be required before proceeding.